



**Breathtaking
quality
Powerfully
Profitable
High Speed
High Volume
UV flatbed**

Inca Onset Q40i

Fujifilm proudly announces the Inca Onset Q40i, the latest addition to its market-leading Inca Onset range of full-bed array wide-format UV flatbed inkjet printers. The Onset Q40i has been developed to address the growing market for an ultra-high-quality flatbed printer capable of delivering high production speeds. It accomplishes this by utilizing a very small droplet droplet size (9 picoliter) jetted through 42,000 nozzles to produce ultra-crisp images, fine lines, sharp text and smooth tonal graduations with output quality traditionally associated with commercial offset printing. Onset Q40i is capable of producing sellable output at speeds in excess of 3,200 ft²/hr equating to 61 5' x 10' beds per hour.

Offering many of the features associated with the Onset range, including a wide color gamut, optional white, variable satin to gloss finish, advanced job management and automation, the Onset Q40i produces superb POP-quality display graphics economically at throughput speeds of 61 full beds/hr and onto substrates up to 1.96" (50mm) thick.

In addition to CMYK configuration, the Q40i is also available in a 6-color configuration with CMYK+LcLm as well as white. A customer can choose to configure their press with one or both of these options. In addition, the ability to vary the gloss level directly from the operator console gives the user flexibility to set the desired gloss level on a per job basis.

To ensure maximum throughput, the Inca Onset Q40i is compatible with Inca's flexible automation system which offers customers the choice to operate in manual, semi or three quarter automation from the same configuration, as well as Inca's Software Suite which includes Reporter Pro, Inca Vision and Print Run Controller (PRC) software.

Inca Onset Q40i Features:

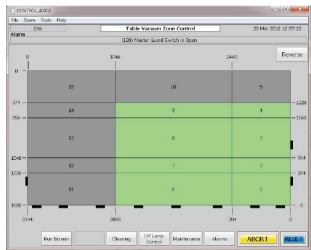
- High Quality, high speed output up to 61 beds an hour
- iNozzle auto nozzle mapping technology
- 15 zoned vacuum print bed
- Variable gloss levels from stain to gloss
- Automated print head sensor protection
- Reporter Pro & Print Run Controller software
- Inca Vision remote diagnostics software

UVIJET INK

The Fujifilm Uvijet family of inks offers excellent adhesion and flexibility. Uvijet inks have been developed for a wide range of media. Ideal for both indoor and outdoor applications including banners, POP, backlit images, exhibition graphics, signage, printing onto glass, metal, acrylic and board for example. These inks have been specifically formulated to maximize production output and provide a wide color gamut coupled with bright colors.

ZONED VACUUM BED WITH 15 ZONES

The Onset Q40i is the first Inca platform to offer a zoned bed. With 15 user selectable zones, the need to mask the bed is significantly reduced in order to maximize productivity and allow for faster changeovers between jobs.



New user controllable vacuum zones are controlled via the Print PC as shown above

ONSET Q40i – FOUR OR SIX COLOR

The Onset Q40i four-color offers an affordable solution for fast and accurate printing for a wide range of point of sale and graphic display applications. Onset Q40i six-color gives the operator the ability to enhance print quality by adding light cyan and light magenta colors. This provides even smoother color transitions of light colors and skin tones. A six-color Q40i is an excellent solution for customers selling print for closer viewing distances or as an alternative to offset prints.

ONSET Q40i - WHITE OPTION

Onset Q40i with white offers customers the opportunity to print a white layer under or over the CMYK content, using automatic print modes selected at the RIP. White can also be used as a spot color as part of the image. This can be configured with a 4 color Q40i or a 6 color Q40i. The excellent reliability of the recirculating print heads as developed by Fujifilm Dimatix makes it possible to overprint or underprint white with confidence in the finished product. In addition, with two channels of white, the opacity is impressive with just one print cycle.

OPTIONAL 3/4 AUTOMATION SYSTEM

The optional 3/4 automation system increases the throughput of the Q40i by 25-50% by minimizing handling time from 20-45 seconds manually, down to 8 seconds with automation. As a result, the Q40i can produce up to 61 beds per hour with automation as opposed to up to 44 beds per hour manually (with 30 seconds handling). The pre-load table allows the operator to place and pre-register the sheet(s) while the press is printing. The pre-load table allows accurate pre-loading of 1-up full bed sheets, or 3-up 40"x60" sheets. The automation system then automatically loads from the pre-load table to the print and removes each sheet from the print bed to a finished stack on an automated scissor lift. The finished stack can be configured to long edge, short edge or recessed in ground unloader.

SPECIFICATIONS:

Inca Onset Q40i

SPECIFICATIONS:

Print Area

- ▶ 123.6" x 63"
(edge to edge printing)

Print Finish

- ▶ Variable, Satin to Gloss
- ▶ Max. Substrate Thickness
- ▶ 1.96", 50mm

RIP

- ▶ ColorGATE Production Server (Fujifilm edition), Version 7.0 or later
- ▶ Caldera Grand RIP+ 9.0 (Fujifilm edition) or later

Fujifilm Uvijet UV Inks

- ▶ OB or OZ - series UV curable inks (CMYK + Light cyan and magenta)

Space Required

- ▶ Manual – 19' 4" (W) x 45' 3" (L)
- ▶ Short-Edge Auto – 23' 3" (W) x 54' 5" (L)
- ▶ Long-Edge Auto – 35' 1" (W) x 42' 7" (L)

Power

- ▶ 380-480V 3-Phase 50/60 Hz, rated to 100A

Factory Air requirement

- ▶ 90 PSI (6 bar)

Network

- ▶ 1000 Base-T
- ▶ Product specifications are subject to change without notice.

Beds Produced Per Hour

12 pass Bi-di Satin • Gloss	61 • 47
16 pass Bi-di Satin • Gloss	60 • 46
18 pass Bi-di Satin • Gloss	59 • 45
24 pass Bi-di Satin • Gloss	33 • 29
32 pass Bi-di Satin • Gloss	33 • 29

Handling time is 8 seconds

Sq Ft Produced Per Hour

12 pass Bi-di Satin • Gloss	3,283 • 2,518
16 pass Bi-di Satin • Gloss	3,229 • 2,518
18 pass Bi-di Satin • Gloss	3,175 • 2,422
24 pass Bi-di Satin • Gloss	1,778 • 1,549
32 pass Bi-di Satin • Gloss	1,746 • 1,524



THE FUJIFILM GREEN POLICY

We at Fujifilm believe that "sustainable development" of the Earth, mankind, and companies in the 21st century is an issue that must be addressed with the highest priority. As a socially responsible corporation, we actively undertake corporate activities with our environmental values in mind. We strive to be a dedicated steward of the environment and assist our customers and corporate partners in doing the same.